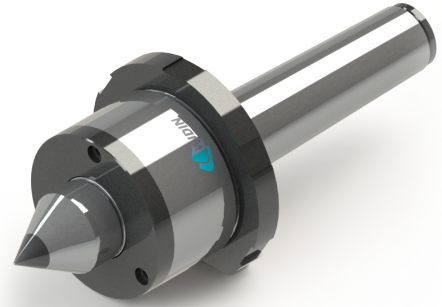
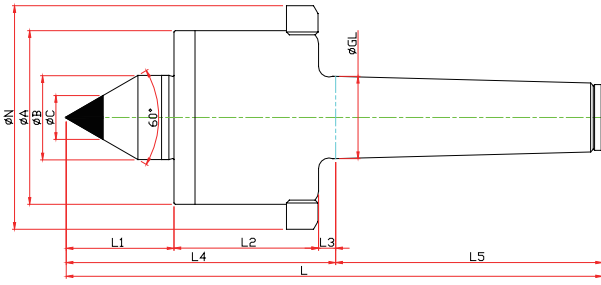


SMPCN-TYPE

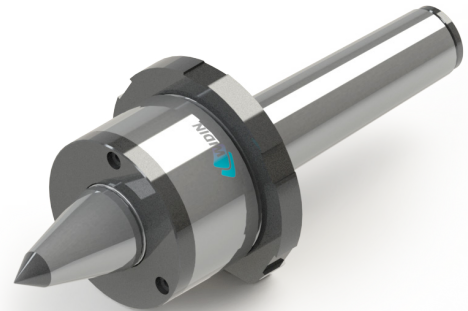
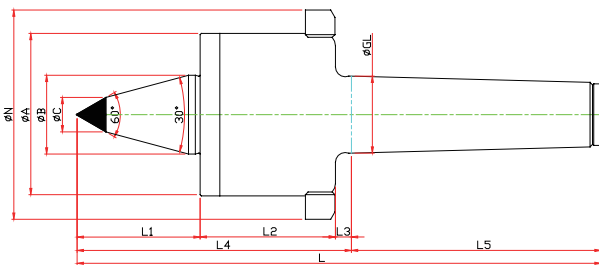
※ 너트, 초경 타입 Nut, Carbide Type



Model	Order Number	Morse Taper	Dimension											Weight MAX.	R.P.M MAX.	Run Out
			GL	A	B	L1	L2	L3	L4	L5	C	N	L			
LC-3SMPCN	050113	NO.3	23,825	52	22	30	51	5	86	81	10	70	167	330	12000	0.003
LC-4SMPCN	050114	NO.4	31,267	66	32	41	55	6.5	102.5	101.5	14	85	204	1100	10000	0.003
LC-5SMPCN	050115	NO.5	44,399	82	40	51	75	6.5	132.5	129.5	18	105	262	2200	8000	0.005

SMPBCN-TYPE

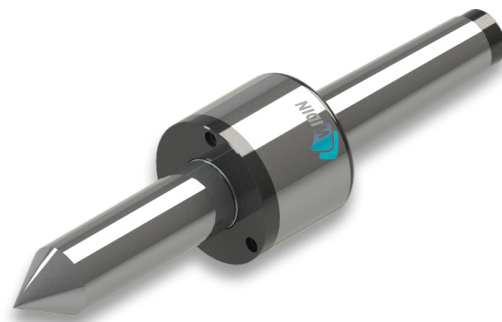
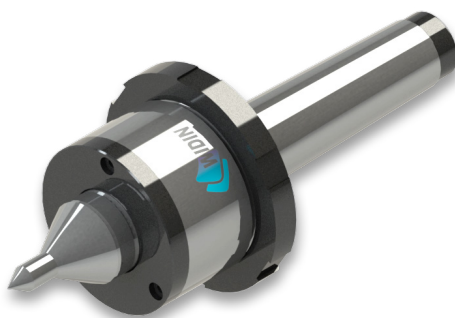
※ SHAFT 확장(바이트 간섭 최소화) SHAFT EXTENTION(Minimize the bite-interference)
 ※ 너트, 초경타입 Nut, Carbide Type



Model	Order Number	Morse Taper	Dimension												Weight MAX.	R.P.M MAX.	Run Out
			GL	A	B	b	L1	L2	L3	L4	L5	C	N	L			
LC-3SMPBCN	051113	NO.3	23,825	52	22	10	40	51	5	96	81	10	70	177	160	12000	0.003
LC-4SMPBCN	051114	NO.4	31,267	66	32	14	50	55	6.5	111.5	101.5	14	85	213	520	10000	0.003
LC-5SMPBCN	051115	NO.5	44,399	82	40	16	65	75	6.5	146.5	129.5	16	105	276	940	8000	0.005

SMP SPECIAL

※ 사용자의 조건에 따라 주문, 제작 Customized-special production for user's condition



NC-TYPE

NCP-TYPE

NK-NKD TYPE

GR-SM TYPE

SMP-TYPE

D50 TYPE

HD-TYPE

PT-TYPE

LM CENTER

LM-H CENTER